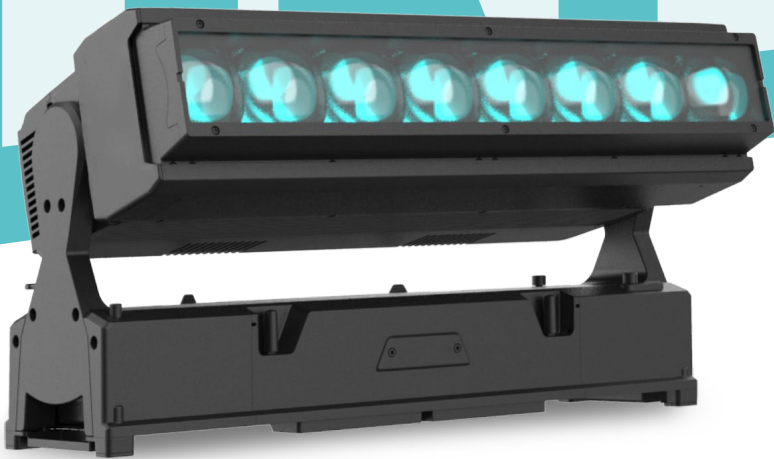


# LIGHT TRUCK



## Evo T Single

- 18\*60W  
RGB LED
- 16\*10W  
CW LED
- 10000Lm  
OUTPUT
- 3° ~ 46°  
BEAM ANGLE
- 2400 ~ 8500  
CCT
- 22/29/69  
CHANNEL
- 512  
DMX
- RDM
- ARTNET/sACN  
RJ45
- 240°  
Tilt
- 690W
- IP55

Adopts 8×60W RGBL LED + 16×10W CW LED light source  
 Total luminous flux 10,000 lumens  
 Beam Angle 3~46° zoom  
 CCT 2400 ~ 8500K  
 IP55

#### OPTIC

- Source: 8×60W RGBL LED + 16×10W CW LED
- Output: 10000 Lm
- Zoom Range: 3~46°
- CCT: 2400 ~ 8500K
- Source lifetime: >20000 H

#### EFFECT

- Strobe: 1~25Hz
- LED refresh rate: 900Hz~25KHz
- Uniform RGBL color mixing system and rainbow effect, single point LED control
- Create unlimited dynamic, unlimited color changes

#### CONTROL & PROGRAM

- Channel: 22/29/69 CH
- Protocol: DMX512, RDM, ArtNet/sACN
- Data connector: 3 PIN (or 5 PIN) XLR,RJ45
- Display: 2.4 inches touch screen
- NFC: The lighting fixtures do not require power on and can be directly set up, diagnosed, and perform other functions through the CKC app

#### SOFTWARE

- Via DMX signal to update
- Static waterproof fan, intelligent speed control
- Intelligent temperature protection to ensure LED service life

#### PAN & TILT MOVEMENT

- Tilt: 210° 8bit/16bit

#### HOUSING

- Aluminum alloy structure + plastic (VO)
- Fan cooling
- Resistant to salt corrosion

#### POWER CONSUMPTION

- Voltage: AC 100V~240V 50/60Hz
- Rated power: 690 W

#### OTHER

- IP rating: IP55
- Work environment: -40°C ~ 45°C
- Startup environment: -20°C ~ 45°C

#### SIZE & WEIGHT

- Size: 502 × 140 × 337 mm
- N.W: 13.5 kgs



#### PHOTOMETRICAL DATA

Distance(m)	0	5	10	15	20	30
Lux 3°		27000	6750	3000	1688	750
Diameter(m)		0.26	0.52	0.79	1.05	1.57
Lux 46°		2060	515	229	129	57
Diameter(m)		4.24	8.49	12.73	16.98	25.47

