

# LIGHTS

# TRIPLE



## Evo T Double

- 16\*60W RGBL LED
- 32\*10W CW LED
- 24000Lm OUTPUT
- 4° ~ 35° BEAM ANGLE
- 2400 ~ 8500 CCT
- 6 Kinds CHANNEL
- 512 DMX
- RDM
- ARTNET/SACN RJ45
- 240° Tilt
- 1300W
- IP55

Adopts 16 × 60W RGBL LED + 32×10W CW LED light source  
 Total luminous flux 24,000 lumens  
 Beam Angle 4~35° zoom  
 CCT 2400 ~ 8500K  
 IP55

#### OPTIC

- Source: 16 × 60W RGBL LED + 32×10W CW LED
- Output: 24000 Lm
- Zoom Range: 4~35°
- CCT: 2400 ~ 8500K
- Source lifetime: >20000 H

#### EFFECT

- Strobe: 1~25Hz
- LED refresh rate: 900Hz~25KHz
- Uniform RGBL color mixing system and rainbow effect, single point LED control
- Create unlimited dynamic, unlimited color changes

#### CONTROL & PROGRAM

- Channel: 24/31/122/22/30/70 CH
- Protocol: DMX512, RDM, ArtNet/sACN
- Data connector: 3 PIN (or 5 PIN) XLR,RJ45
- Display: 2.4 inches touch screen
- NFC: The lighting fixtures do not require power on and can be directly set up, diagnosed, and perform other functions through the CKC app

#### SOFTWARE

- Via DMX signal to update
- Static waterproof fan, intelligent speed control
- Intelligent temperature protection to ensure LED service life

#### TILT MOVEMENT

- Tilt: 210° 8bit/16bit

#### HOUSING

- Aluminum alloy structure + plastic (VO)
- Fan cooling

#### POWER CONSUMPTION

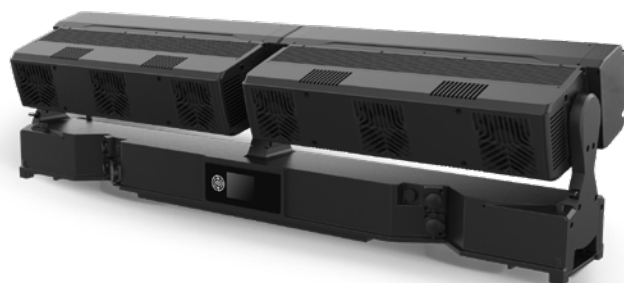
- Voltage: AC 100V~240V 50/60Hz
- Rated power: 1300 W

#### OTHER

- IP rating: IP55
- Work environment: -40°C ~ 45°C
- Startup environment: -20°C ~ 45°C

#### SIZE & WEIGHT

- Size: 1004 × 140 × 337 mm
- N.W: 24.7 kgs



#### PHOTOMETRICAL DATA

Distance(m)	0	5	10	15	20	30
Lux 4°		53000	13250	5889	3313	1472
Diameter(m)		0.35	0.70	1.05	1.40	2.10
Lux 35°		4200	1050	467	263	117
Diameter(m)		3.15	6.31	9.46	12.61	18.92

